



Characteristics of proton velocity distribution functions in the near-lunar wake from Chandrayaan-1/SWIM observations



M.B. Dhanya^{a,*}, Anil Bhardwaj^a, Yoshifumi Futaana^b, Stas Barabash^b, Abhinaw Alok^a, Martin Wieser^b, Mats Holmström^b, Peter Wurz^c

^aSpace Physics Laboratory, Vikram Sarabhai Space Center, Trivandrum 695022, India

^bSwedish Institute of Space Physics, Box 812, Kiruna SE-98128, Sweden

^cPhysikalisches Institut, University of Bern, Sidlerstrasse 5, CH-3012 Bern, Switzerland

ARTICLE INFO

Article history:

Received 9 April 2015

Revised 19 December 2015

Accepted 27 January 2016

Available online 4 February 2016

Keywords:

Moon

Solar wind

Magnetic fields

ABSTRACT

Due to the high absorption of solar wind plasma on the lunar dayside, a large scale wake structure is formed downstream of the Moon. However, recent in-situ observations have revealed the presence of protons in the near-lunar wake (100 km to 200 km from the surface). The solar wind, either directly or after interaction with the lunar surface (including magnetic anomalies), is the source of these protons in the near-wake region. Using the entire data from the SWIM sensor of the SARA experiment onboard Chandrayaan-1, we analyzed the velocity distribution of the protons observed in the near-lunar wake. The average velocity distribution functions, computed in the solar wind rest frame, were further separated based on the angle between the upstream solar wind velocity and the IMF. Although the protons enter the wake parallel as well as perpendicular to the IMF, the velocity distribution were not identical for the different IMF orientations, indicating the control of IMF in the proton entry processes. Several proton populations were identified from the velocity distribution and their possible entry mechanism were inferred based on the characteristics of the velocity distribution. These entry mechanisms include (i) diffusion of solar wind protons into the wake along IMF, (ii) the solar wind protons with finite gyro-radii that are aided by the wake boundary electric field, (iii) solar wind protons with gyro-radii larger than lunar radii from the tail of the solar wind velocity distribution, and (iv) scattering of solar wind protons from the dayside lunar surface or from magnetic anomalies. In order to gain more insight into the entry mechanisms associated with different populations, backtracing is carried out for each of these populations. For most of the populations, the source of the protons obtained from backtracing is found to be in agreement with that inferred from the velocity distribution. There are few populations that could not be explained by the known mechanisms and remain unknown.

© 2016 Elsevier Inc. All rights reserved.

1. Introduction

When the supersonic solar wind flows past the Moon, it leaves a cavity behind the Moon known as lunar plasma wake. Recent observations in the near-lunar wake region (100 km to 200 km from the surface) have revealed the presence of protons (Dhanya et al., 2013; Futaana et al., 2010; Halekas et al., 2014; Nishino et al., 2009a; 2009b; Wang et al., 2010; Wiehle et al., 2011). These protons, which are basically solar wind protons, reach the near-lunar wake due to various processes (Bhardwaj et al., 2015; Halekas et al., 2015).

Protons were found to enter the lunar wake parallel to the direction of interplanetary magnetic field (IMF) at 100 km from the lunar surface by SARA/Chandrayaan-1 (Futaana et al., 2010). These observations were at solar zenith angle (SZA) of $\sim 140^\circ$ (50° behind the terminator) and the IMF was dominantly perpendicular to solar wind velocity. The energy of the protons was higher compared to that of solar wind and the density was around 0.1% of the solar wind proton density. The simple 1-D model for the plasma expansion into the vacuum (Gurevich et al., 1973; Samir et al., 1983) did not explain the presence of these protons. In the mid-wake region of $\sim 3.5 R_L$ downstream (R_L refers to radius of the Moon), ARTEMIS has also observed protons parallel to IMF (Halekas et al., 2011; Wiehle et al., 2011). These observations were found to be in agreement with the 1-D plasma expansion model at this distance. Recently, Halekas et al. (2014) have investigated the one-dimensional solutions for parallel filling of the wake using hot ion distributions

* Corresponding author. Tel.: +91 4712563884; fax: +91 4712706535.

E-mail address: dhanya_m_b@yahoo.co.in, mb_dhanya@vssc.gov.in (M.B. Dhanya).

(rather than the conventional cold ion approximation) and using Maxwellian as well as kappa distribution functions for the solar wind electrons. The solutions were compared with ARTEMIS observations and found to be in agreement.

Several observations have also shown that the protons enter the near-wake in a direction perpendicular to the IMF. Nishino et al. (2009b) have reported observations at 100 km altitude and SZA closer to 150°. These protons from the solar wind enter into the near-lunar wake due to an increase in their gyro-radii under the influence of the electric field at the wake boundary. Nishino et al. (2009a) have reported protons at 100 km altitude closer to SZA of 168°. These protons had a wider energy range: starting from lower than that of solar wind to well above the solar wind energy. The maximum energy observed was around six times that of solar wind. Backtracing of these protons showed that they are solar wind protons scattered at larger angles upon interaction with the dayside lunar surface (Holmström et al., 2010; Saito et al., 2008). Their trajectories under the influence of the IMF and the convective electric field of the solar wind (E_c) provide access to the deeper lunar wake. Wang et al. (2010) have reported protons in the near-lunar wake closer to the terminator regions of Moon. Closer to the terminator, these protons had energies less than that of solar wind, whereas their energy was found to increase further inside the lunar wake. These protons, which travel dominantly perpendicular to IMF, were proposed to be the solar wind protons that are forward scattered from the lunar surface closer to the terminator region.

In all the above reported events the background IMF was dominantly perpendicular to the solar wind velocity (flow). Later, Nishino et al. (2013) showed that the mechanism by which the surface scattered protons reaches the wake (Nishino et al., 2009a) operates for other IMF orientations also, except perfectly aligned flow, where the convective electric field, $E_c \sim 0$. Dhanya et al. (2013) have reported the proton observation in the low-altitude (100 km) wake when the IMF was aligned with the solar wind flow, a case where parallel entry along IMF as well as perpendicular entry under the influence of convective electric field cannot play a role. The energy of the observed protons were higher than that of average solar wind energy by few 100 eV. Those protons are from the higher energy tail of the solar wind velocity distribution. They access the deeper wake due to their larger gyro-radius.

In the context of entry of the protons to the near-lunar wake by various mechanisms, we have investigated the characteristics of velocity distribution of the protons in the low-altitude (100 km to 200 km from the surface) wake by using all the available data from the Solar Wind Monitor (SWIM) sensor of the SARA (Sub-keV Atom Reflecting Analyser) experiment on Chandrayaan-1. This will help us to understand the different proton populations in the lunar wake.

2. Instrumentation and data sources

The solar Wind Monitor (SWIM) was one of the two sensors of the SARA experiment on Chandrayaan-1 mission (Barabash et al., 2009; Bhardwaj et al., 2005), which was a polar orbiting satellite around the Moon. SWIM was an ion-mass analyzer with a fan-shaped field of view (FoV). The SWIM FoV was divided into 16 angular pixels of resolution $\sim 3.5^\circ$ (elevation) $\times 10^\circ$ (azimuth), depending on the viewing direction. The energy coverage of SWIM was 100–3000 eV/q with $\Delta E/E \sim 7\%$. SWIM measured ion flux in logarithmically separated 16 energy steps. The measurement for one energy and direction takes 31.25 ms. The SWIM FoV plane was almost perpendicular to the velocity vector of the spacecraft. One edge of the fan-shaped FoV looks toward the Moon and the other to the zenith. Assisted by the nadir-pointing spacecraft motion, the FoV covers $\sim 2\pi$ (half hemisphere) within half of the orbit. However, this means that the SWIM FoV plane changes its

orientation according to the latitude. The FoV plane is in the ecliptic plane closer to the equator and it was perpendicular to the ecliptic plane closer to the poles (more details about FoV orientation can be found in Futaana et al. (2010) and Dhanya et al. (2013)).

Due to the motion of Earth around the Sun, the orbital plane of Chandrayaan-1 had a drift of $\sim 1^\circ$ per day with respect to the Sun. This helps to have SWIM observations closer to the dawn-dusk terminator (March–April 2009) as well as in the noon-midnight plane (June–July 2009). Chandrayaan-1 was in a 100 km circular orbit till mid May 2009; subsequently, the orbit was raised to 200 km. The SWIM data obtained from both altitudes (January–July 2009 period) are considered for the analysis in this paper. After excluding the days when the Moon was in the Earth's magnetosheath and magnetotail, about 500 orbits of observation data in total is used in the analysis.

For the upstream solar wind parameters, such as solar wind velocity, density, and IMF orientation, we have used level-2 data from the SWEPAM and MAG instruments on the ACE satellite. Since ACE makes measurements near the L1 point, the data have been time-shifted to the location of Moon by considering the solar wind speed and distance of ACE from the Moon at each instant.

3. Co-ordinate systems

For the analysis, we have used mainly two co-ordinate systems:

- (1) aberrated Lunar-centric Solar Ecliptic (aLSE) co-ordinate system, and
- (2) Lunar Solar wind Electric field (LSwE) co-ordinates.

In aLSE co-ordinate system, the x -axis is towards the anti-solar wind velocity ($-V_{sw}$) which has been corrected for aberration due to the motion of Earth–Moon system, the z -axis is towards ecliptic north and y -axis completes the right handed co-ordinate system.

In LSwE co-ordinates (see Fig. 1), the x -axis is towards the anti-solar wind velocity (similar to aLSE), whereas the z -axis is along the convective electric field of the solar wind ($E_c = -V_{sw} \times B_{IMF}$), and the y -axis completes the right handed co-ordinate system. In this co-ordinates, IMF (B_{IMF}) will be confined in the x – y plane with the y -component always positive. The processes by which the protons enter the near lunar wake may depend on the orientation of IMF and the convective electric field, whose direction varies. The LSwE co-ordinate system helps to confine the direction of IMF in specific plane and that of the convective electric field in particular direction.

In addition, we have used the solar wind rest frame, which is a frame moving with the solar wind and hence the convective

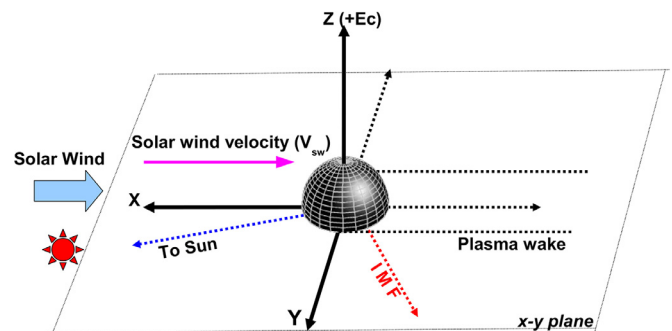


Fig. 1. Illustration of LSwE co-ordinate system. The x -axis is along anti-solar wind velocity, z -axis is along the convective electric field of the solar wind ($E_c = -V_{sw} \times B_{IMF}$) and the y -axis completes the right handed co-ordinate system. In this co-ordinate system IMF (B_{IMF}) will be confined in the x – y plane with the y -component always positive (sample direction as red dotted arrow). (For interpretation of the references to color in this figure legend, the reader is referred to the web version of this article.)

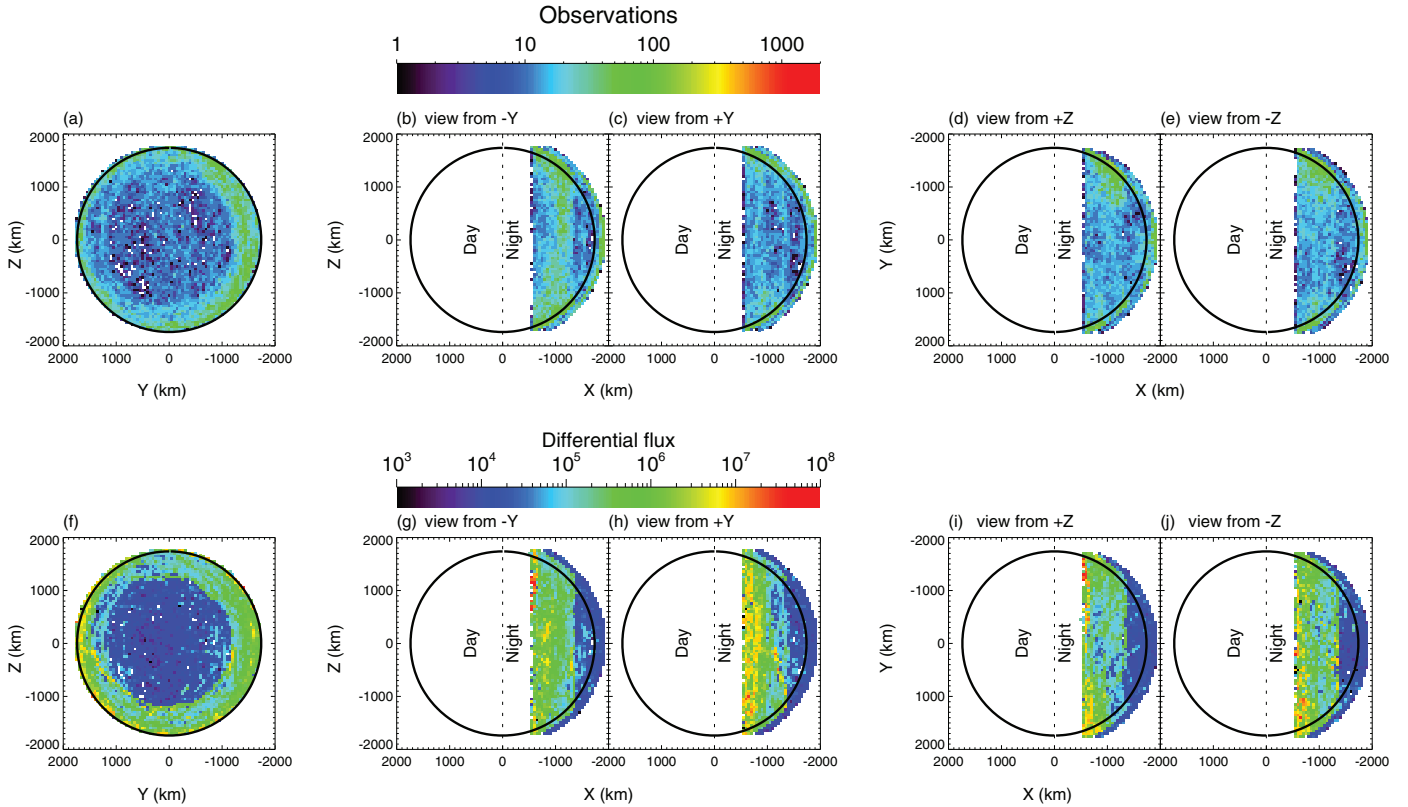


Fig. 2. Maps of wake protons in LSWe co-ordinate system. The top panel shows the number of observations in different planes whereas the bottom panel shows the observed differential flux. (a) The map of number of observations projected onto the y - z plane, (b) number of observations in the x - z plane ($V_{sw} - E_c$ plane) as viewed from the direction of $-y$, (c) same as (b) but viewed from the direction of $+y$, (d) number of observations in the x - y plane ($V_{sw} - B_{IMF}$ plane) as viewed from the direction of $+z$ ($+E_c$), (e) same as (d) but as viewed from the direction of $-z$ ($-E_c$), (f) observed differential flux projected onto the y - z plane, (g) observed differential flux projected onto the x - z plane ($V_{sw} - E_c$ plane) as viewed from the direction of $-y$, (h) same as (g) but as viewed from the direction of $+y$, (i) observed differential flux projected onto the x - y plane ($V_{sw} - B_{IMF}$ plane) as viewed from the direction of $+z$ ($+E_c$), (j) same as (i) but as viewed from the direction of $-z$ ($-E_c$). (For interpretation of the references to color in this figure, the reader is referred to the web version of this article.)

electric field is zero. This frame has been used to discuss the velocity distribution function of protons in the wake where proton velocities are resolved into components having direction parallel and perpendicular to the IMF.

4. Observation

SWIM made observations in the lunar wake in every orbit, initially from 100 km altitude, and later from 200 km altitude. The location of the observations in the lunar wake in LSWe (spacecraft location) are binned into grid cells of size 100 km \times 100 km. The differential flux observed by SWIM when the spacecraft was located over any grid cell is accumulated in that grid cell. Since there will be multiple observations over any grid cell, due to repeated orbits, the accumulated counts on a given grid cell is divided by the number of observations in that grid cell to get the average differential flux. The 2D maps of the number of observations in the lunar wake and the observed differential flux, projected in different planes of the LSWe co-ordinates are shown in Fig. 2.

The top panels (Fig. 2a–e) show the 2-D map of number of observations projected onto different planes. In most cases, there are several observations over a given location. The corresponding differential flux has an asymmetry along the $-z$ -axis (E_c), with higher differential flux at the $+E_c$ ($+z$) hemisphere compared to the $-E_c$ ($-z$) hemisphere within few 100 kms from the terminator (strip in red color seen Fig. 2i compared to Fig. 2j). This asymmetry may be due to the role of the electric field in aiding the entry of protons to near-wake across the $+E_c$ pole. Similarly, the differential flux is

asymmetric along y , with the flux in $-y$ (Fig. 2g) being higher than in $+y$ (Fig. 2h), closer to limb. Since IMF lies in the x - y plane with $+y$ component always positive, the asymmetry between $-y$ and $+y$ may be associated with the diffusion of solar wind parallel ($-y$) and anti-parallel to IMF ($+y$). Hence, for further analysis we have chosen five locations as shown in Fig. 3. The location 1 is closer to $+E_c$ pole, location 2 is closer to $-E_c$ pole, location 3 is closer to $+y$ limb, location 4 is closer to $-y$ limb, and location 5 is in the central wake. While the location 5 consists of observations from spatial grid extend of 400 km \times 400 km (in y - z plane in LSWe co-ordinates), other locations are rectangular having spatial extents of 200 km \times 400 km. The locations 1 to 4 are at a distance of 1500 km to 1700 km from the center of the wake. Due to the finite gyro-radius of protons in the solar wind, there is always a possibility for protons to be found in lunar wake close to the terminator. Hence the observations very close to the terminator (limb observations) are excluded.

Using the information on the energy and the direction of the particles observed by SWIM in the above mentioned five locations, the velocity distribution functions are computed in the aLSE co-ordinates and transformed to the solar wind rest frame. The velocity distribution functions are indeed functions of three dimensional velocity space, but to understand the population in a simple manner, we used the two dimensional velocity space, namely in the directions parallel and perpendicular to the IMF (v_{\parallel} and v_{\perp}). Note that we employ the solar wind rest frame for this analysis. Indeed this frame is frequently used for the pitch angle ($=\arctan(v_{\perp}/v_{\parallel})$) analysis. This frame is helpful for understanding the physical mechanisms of acceleration and the initial velocity

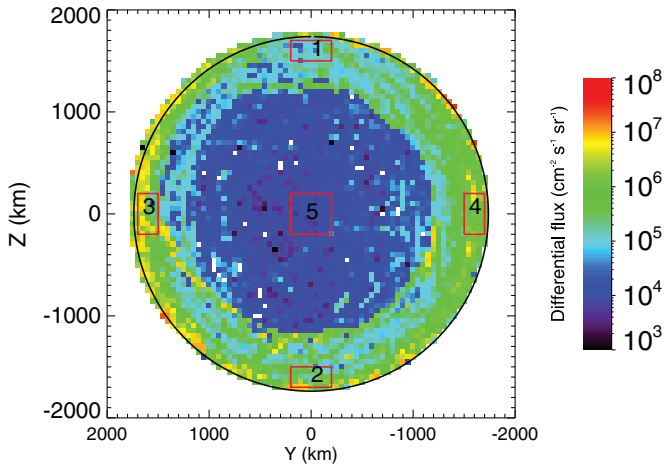


Fig. 3. Map of differential flux of wake ions in the $y-z$ plane of the LSWE coordinate system, showing the 5 locations of interest (enclosed by red rectangular boxes). Location 1 at $+E_c$ limb, location 2 at $-E_c$ limb, location 3 at $+y$ limb, and location 4 at $-y$ limb, and location 5 at the central wake. The locations 3 and 4 are in the plane containing solar wind velocity and IMF. (For interpretation of the references to color in this figure legend, the reader is referred to the web version of this article.)

vector of the protons, if they are produced near the Moon (such as exospheric ions).

To understand the prevailing upstream solar wind conditions during the SWIM observations at locations 1 to 5 in lunar wake, the velocity distribution of the upstream solar wind was also computed. The solar wind velocity data from the ACE spacecraft that has been time shifted to the location of Moon was resolved into components parallel (v_{\parallel}) and perpendicular (v_{\perp}) to the IMF in aLSE co-ordinates. The velocity components (v_{\parallel} and v_{\perp}) are binned into $50 \text{ km s}^{-1} \times 50 \text{ km s}^{-1}$ grids. The frequency distribution, i.e., how

many times the solar wind velocity was observed to be in a specific bin, for those days and timings where SWIM had observations over location-1 to location-5 is considered as the representative of the upstream solar wind condition. Fig. 4 shows the velocity distribution of the protons in the solar wind rest frame that are observed in locations 1–5 together with the upstream solar wind distribution in aLSE co-ordinate system.

From Fig. 4a–e, it can be seen that all the locations except location-5, have several velocity bins with significant values of the distribution function above the prevailing background. The velocity bins which have value of the distribution function above $10^{-13} \text{ s}^3 \text{ m}^{-6}$ are considered to be significant above the background (1 count level). To identify the different populations of protons from the velocity distribution map, a selection criterium was employed in which any velocity bin is analyzed in the following manner. In the analysis, all the eight velocity bins surrounding a given bin (say center bin) are considered. Please note that all the bins referred here are in the velocity space (v_{\parallel} , v_{\perp}). The value of the distribution function in the center bin is compared with that of the surrounding eight bins and if the value in the surrounding bins are lower than that of the center bin by 50%, the proton velocity distribution represented in the center bin together with the surrounding bins are considered as belonging to the same population.

If the value of the distribution function in any of the eight bins (say $vbin1$) is higher than that of the center bin by more than 50%, then $vbin1$ is considered as the new center bin. The value of the distribution function in the eight bins surrounding $vbin1$ are compared with that of $vbin1$. This continues till all the eight velocity bins surrounding a center bin are found to have value less than that of the center bin (by 50%). Once this is met, the velocity distribution represented from the first center bin till the final center bin are considered as belonging to a given population. According to this selection criterium, the prominent populations are marked in Fig. 4 (P1–P12). For location 5, which is close to the central wake

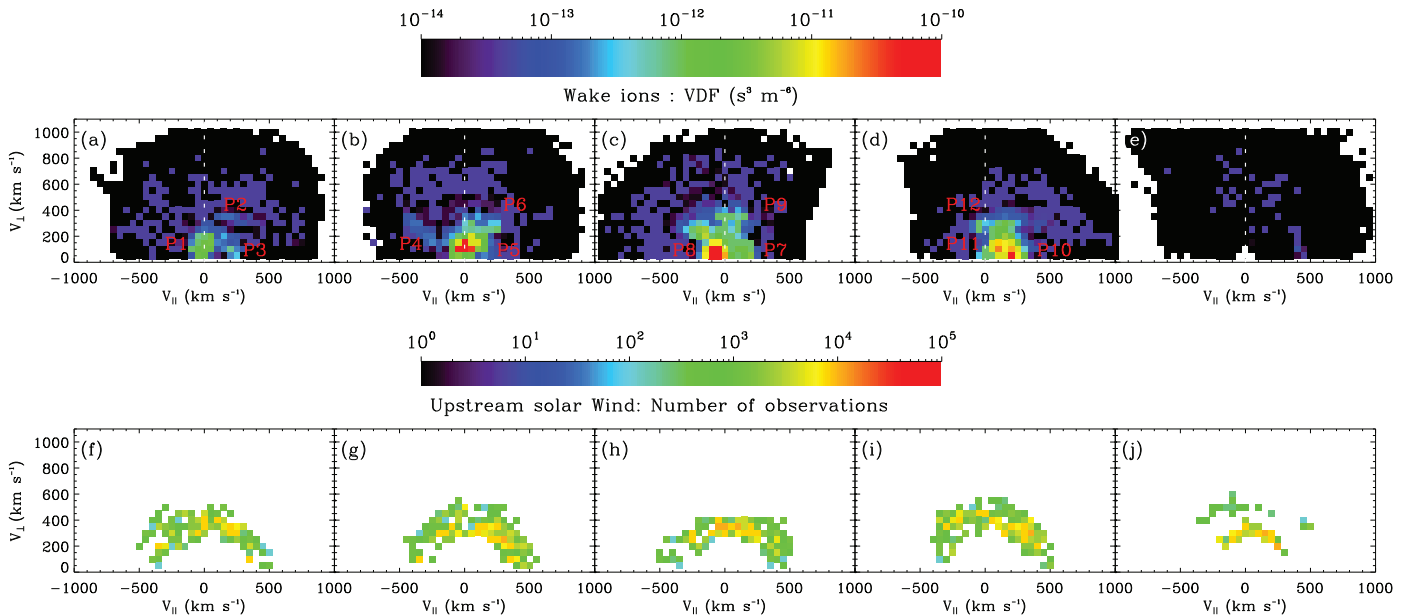


Fig. 4. Top panel shows the velocity distribution of protons in the near lunar wake in the solar wind rest frame, and bottom panel shows the upstream solar wind distribution (from ACE) corresponding to the SWIM observations at each of the locations 1–5. (a) velocity distribution of protons observed in location 1, (b) velocity distribution of protons observed in location 2, (c) velocity distribution of protons observed in location 3, (d) velocity distribution of protons observed in location 4, (e) velocity distribution of protons observed in location 5, (f) velocity distribution of upstream solar wind during the SWIM observations in lunar wake in location 1, (g) velocity distribution of upstream solar wind during the SWIM observations in lunar wake in location 2, (h) velocity distribution of upstream solar wind during the SWIM observations in lunar wake in location 3, (i) velocity distribution of upstream solar wind during the SWIM observations in lunar wake in location 4, (j) velocity distribution of upstream solar wind during the SWIM observations in lunar wake in location 5. Refer to Fig. 3 for the definition of the different locations. ‘P1’ to ‘P12’ indicate the prominent proton populations at the different locations.

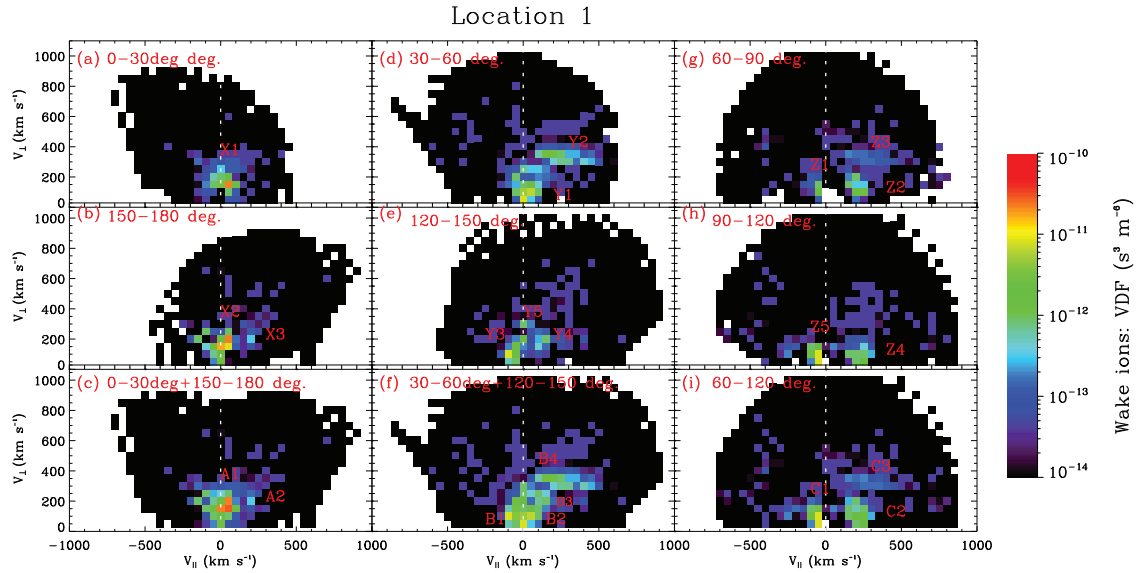


Fig. 5. The velocity distribution of wake protons at location 1 in the solar wind rest frame under different IMF angles of (a) 0° – 30° , (b) 150° – 180° , (c) 0° – 30° and 150° – 180° combined, (d) 30° – 60° , (e) 120° – 150° , (f) 30° – 60° and 120° – 150° combined, (g) 60° – 90° , (h) 90° – 120° , (i) 60° – 120° combined bin. The white colored dotted vertical line in each panel is drawn at $v_{\parallel} = 0$. The prominent proton populations are marked in the figure (X1, X2, X3, A1, A2, Y1, Y2, Y3, Y4, Y5, B1, B2, B3, B4, Z1, Z2, Z3, Z4, Z5, C1, C2, C3). Summary of the velocity components of the populations along with that of the upstream solar wind can be found in Table 1.

region, the signal strength is too low for any distinct proton population to be seen.

In location 1 (Fig. 4a), protons of population P1 have the values of $(v_{\parallel}, v_{\perp})$ around (0, 150) km s^{-1} , those of P2 around (150, 350) km s^{-1} , and of P3 around (250, 50) km s^{-1} . Comparison with the corresponding average upstream solar wind condition (Fig. 4f) shows that protons belonging to P1 and P3 have velocities lower than that of solar wind ($\sim 400 \text{ km s}^{-1}$), whereas P2 have velocity comparable to that of solar wind. P1 comprises of protons of dominant v_{\perp} with negligible v_{\parallel} , P2 have v_{\perp} comparable to that of solar wind with non-zero v_{\parallel} , and P3 have dominant v_{\parallel} with negligible v_{\perp} .

In location 2 (Fig. 4b), three prominent proton populations are observed (P4–P6). Protons belonging to P4 that have comparable v_{\parallel} and v_{\perp} appear as a strip in the velocity space with v_{\parallel} in the range from -200 to -450 km s^{-1} and v_{\perp} in the range 150 – 350 km s^{-1} . P5 is centered around velocity bins of (0, 150) km s^{-1} , and P6 have v_{\parallel} in the range 150 – 300 km s^{-1} and v_{\perp} in the range 200 – 400 km s^{-1} . Comparison with the corresponding upstream solar wind condition (Fig. 4g) shows that while P4, and P6 may have velocities comparable to that of solar wind, P5 have velocities lower than that of solar wind.

Three populations (P7–P9) are observed in location 3 (Fig. 4c) of which P7 have velocities centered around (200, 50) km s^{-1} , P8 around $(-50, 100) \text{ km s}^{-1}$, and P9 around (100, 350) km s^{-1} . Populations P7 and P8 have velocities less than that of the corresponding upstream solar wind (Fig. 4h), whereas P9 have velocities comparable to that of solar wind. In location 4 (Fig. 4d), three populations (P10–P12) are identified. Population P10 is centered around (200, 50) km s^{-1} , P11 around (100, 100) km s^{-1} , and P12 around $(-50, 300) \text{ km s}^{-1}$. All of them have velocities lower than that of the upstream solar wind (Fig. 4i).

Further, the velocity distribution were separated based on the angle between the solar wind velocity and the interplanetary magnetic field in aLSE (θ_{IMF}). Bins of 30° with θ_{IMF} in the range from 0° to 30° , 150° to 180° , 30° to 60° , 120° to 150° , 60° to 90° and 90° to 120° , are considered. Since there was no significant proton population in location 5 (Fig. 4e), location 5 was not included in the further analysis. The IMF sorted velocity distribution for location 1

is shown in Fig. 5. For comparison, the distribution for the combined θ_{IMF} bins where 0° to 30° and 150° to 180° are combined, 30° to 60° and 120° to 150° combined, 60° to 90° and 90° to 120° combined are also shown in the bottom panel of Fig. 5. The prominent proton populations are marked in the figure.

The proton populations P1 to P3, seen in Fig. 4a, show up for different bins of θ_{IMF} as seen from the Fig. 5. X1 (Fig. 5a) and X2 (Fig. 5b) have similar velocity components centered around (50, 150) km s^{-1} and clearly represent the distribution A1 (Fig. 5c) for the combined θ_{IMF} of 0° to 30° and 150° to 180° . The population X3 is similar to A2. Similarly, for the θ_{IMF} of 30° to 60° and 120° to 150° , the distributions Y1 (Fig. 5d) contributes to B2 (Fig. 5f), Y2 (Fig. 5d) contributes to B4 (Fig. 5f), Y3 (Fig. 5e) contributes to B1 (Fig. 5f), Y4 (Fig. 5e) contributes to B3 (Fig. 5f), and Y5 (Fig. 5e) is also part of B3 (Fig. 5f). Similar is the situation for the θ_{IMF} of 60° to 90° and 90° to 120° where C1 (Fig. 5i) is contributed from Z1 (Fig. 5g) and Z5 (Fig. 5h); C3 (Fig. 5i) from Z3 (Fig. 5g); and C2 (Fig. 5i) from Z2 (Fig. 5g) and Z4 (Fig. 5h).

Similar scenario was found to hold for location 2 to location 4 (not shown). Hence, the proton distribution for only the combined bins of θ_{IMF} are presented for locations 2–4 (Fig. 6). The prominent proton populations identified in each of the locations based on the selection criteria are marked in the Fig. 6 from D2 to L2. A summary of the prominent proton populations in each of the locations 1–4 and their velocity components are given in Table 1.

5. Discussion

The source of protons in the near-lunar wake can be categorized into two. The first is the direct solar wind entry (Dhanya et al., 2013; Futaana et al., 2010; Nishino et al., 2009b), and the second is the solar wind after modification due to interaction with lunar surface and magnetic anomalies (Nishino et al., 2009a; Wang et al., 2010). The term ‘direct’ is used to indicate the absence of interaction with lunar surface or magnetic anomalies. The processes which are known for the direct entry are: (1) protons diffusing along the IMF (parallel or anti-parallel to IMF) which can be termed as parallel entry (Futaana et al., 2010), (2) increase in Larmor radii due to the wake boundary electric field (Nishino et al.,

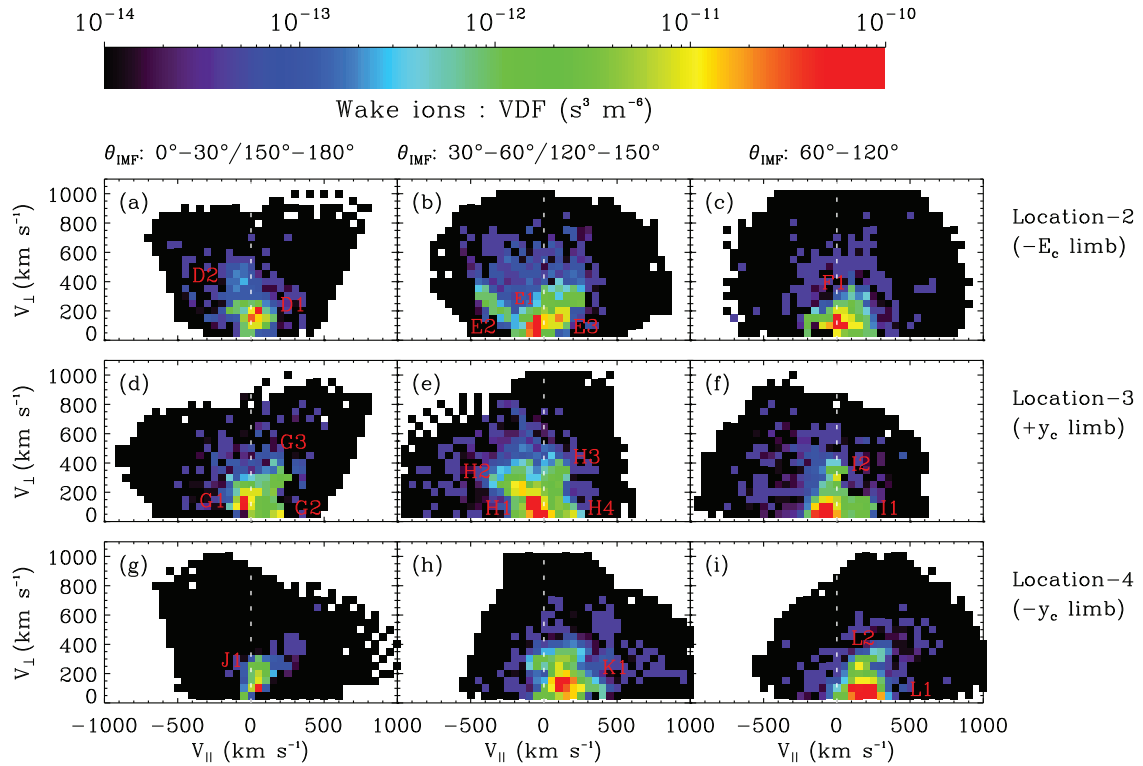


Fig. 6. The velocity distribution of protons in lunar wake in the solar wind rest frame for location 2 to location 4 under different values of θ_{IMF} (angle between solar wind velocity and IMF in aLSE co-ordinates). Each horizontal panel represents the distribution for a given location as indicated on the extreme right of the panels. Within a panel, each plot from left to right represents the velocity distribution for different bins of θ_{IMF} , which is indicated on the top. (a) distribution for θ_{IMF} bin 1 at location 2, (b) for θ_{IMF} bin 2 at location 2, (c) for θ_{IMF} bin 3 at location 2, (d) for θ_{IMF} bin 1 at location 3, (e) for θ_{IMF} bin 2 at location 3, (f) for θ_{IMF} bin 3 at location 3, (g) for θ_{IMF} bin 1 at location 4, (h) for θ_{IMF} bin 2 at location 4, (i) for θ_{IMF} bin 3 at location 4 (see Fig. 3 for the definition of the different locations). The θ_{IMF} bin 1 refers to 0° – 30° and 150° – 180° combined, θ_{IMF} bin 2 refers to 30° – 60° and 120° – 150° combined, θ_{IMF} bin 3 refers to 90° – 120° . The white colored dotted vertical line in each panel is drawn at $v_{\parallel} = 0$. The prominent proton populations are marked in red color from ‘D2’ to ‘L2’ and their velocity components along with that of upstream solar wind are given in Table 1. (For interpretation of the references to color in this figure legend, the reader is referred to the web version of this article.)

2009b), and (3) protons from the tail of the solar wind velocity distribution having large gyro-radii (Dhanya et al., 2013). The scattering of the solar wind upon interaction with the lunar surface or magnetic anomalies and their subsequent trajectory under IMF and convective electric field enable the protons of the second category to enter the near lunar wake (Nishino et al., 2009a; Wang et al., 2010).

In the solar wind rest frame, the parallel entry protons will have dominant v_{\parallel} with almost zero or much smaller v_{\perp} . The magnitude of the velocity (v_p) may be less than that of solar wind (solar wind speed in aLSE). It is to be noted that although Futaana et al. (2010) discussed the observation when IMF was perpendicular to the solar wind velocity vector ($\theta_{IMF} \sim 90^\circ$), this mechanism can operate for other IMF orientations as well, except for magnetic aligned flow ($\theta_{IMF} \sim 0^\circ$). For convenience, we use the term ‘Entry-1’ for this process, in further discussion. Let’s recall that in the LSwE co-ordinates, the IMF is confined in the x - y plane with y -component always positive and V_{sw} is along $-x$. Hence, for IMF angles of 0° to 30° , and 150° to 180° , these protons may not be able to reach location 1, which is closer to $+E_c$ ($+z$) pole. This applies for location 2 also, which is closer to $-E_c$ ($-z$) pole. The parallel entry protons will be able to reach location 3 (along $+y$) and location 4 (along $-y$) for all IMF angles except $\theta_{IMF} \sim 0^\circ$. The populations ‘G2’ and ‘H4’ in location 3, with dominant v_{\parallel} and negligible v_{\perp} are most likely due to Entry-1. The population ‘I1’ in location 3 and ‘L1’ in location 4 may also be associated with Entry-1.

When the solar wind protons enter the lunar wake due to their finite gyro-radius aided by the wake boundary electric field, they travel in a direction perpendicular to IMF (Nishino et al., 2009b).

In the solar wind rest frame, these protons are expected to have a dominant v_{\perp} component and may have a small component of thermal velocity parallel to the magnetic field. Due to the wake boundary electric field, v_{\perp} will be enhanced above the thermal velocity. These protons may be characterized with $v_{\perp} > v_{\parallel}$, and since v_{\parallel} is expected to be negligible, it can be considered that $v_{\parallel} < 0.25 \times v_{\perp}$. The velocity of such protons is expected to be lower than the solar wind bulk velocity. Although this mechanism has been reported for $\theta_{IMF} \sim 90^\circ$, this mechanism is likely to be active for other IMF orientations. For convenience, we use the term ‘Entry-2’ for this process in further discussions. ‘Entry-2’ is same as ‘Type-1’, defined in Nishino et al. (2009a) for the mechanism described in Nishino et al. (2009b). The protons of Entry-2 can reach the $-E_c$ and $+E_c$ poles (locations 1 and 2) for $0^\circ \leq \theta_{IMF} \leq 90^\circ$. These protons may access locations 3 and 4 for smaller values of θ_{IMF} ($\sim 0^\circ$), whereas for larger values of θ_{IMF} , these protons will start to diffuse along the IMF into the wake. Also, Entry-2 protons may not access the central wake, i.e., location 5. The populations A1, B2, C1 in location 1; D1, E1, F1 in location 2; and G1, H1 in location 3 have the characteristics of velocity distribution to be associated with Entry-2.

The protons which enter the lunar wake by virtue of their large gyro-radius (Dhanya et al., 2013) from the high-energy tail of solar wind velocity distribution (having large thermal velocities) are expected to have dominant v_{\perp} . Such protons have gyro-radii larger than the lunar radius in the solar wind. Since the gyro-radius depends on the IMF, which is a variable, the perpendicular velocity (v_{\perp}) of these protons can be either higher or lower than that of solar wind bulk speed depending on the strength of IMF and the magnitude of V_{sw} . For a typical solar wind condition of 400 km s^{-1}

Table 1
Proton velocity distribution in location 1 to location 4.

Location	Population	v_{\parallel}^a	v_{\perp}^b	$ v_p ^c$	$ V_{sw} ^d$
1	A1	0	150	150.0	400
1	A2	200	200	282.8	400
1	B1	-100	100	141.4	400
1	B2	0	200	200.0	400
1	B3	150	200	250.0	400
1	B4	200	350	403.1	400
1	C1	-50	100	111.8	400
1	C2	200	100	223.6	400
1	C3	200	350	403.1	400
2	D1	50	200	206.1	350
2	D2	-50	450	452.8	350
2	E1	-50	100	111.8	350
2	E2	-350	250	430.11	350
2	E3	100	150	180.3	350
2	F1	0	100	100.0	350
3	G1	-50	100	111.8	350
3	G2	200	50	206.1	350
3	G3	200	350	403.1	350
3	H1	0	200	200.0	350
3	H2	-150	250	291.5	350
3	H3	100	350	364.0	350
3	H4	200	50	206.1	350
3	I1	-100	50	141.4	350
3	I2	0	300	300.0	350
4	J1	50	100	111.8	450
4	K1	150	150	212.1	450
4	L1	200	50	250	450
4	L2	150	300	335.4	450

All velocity values in km s^{-1} .

^a Velocity of wake protons parallel to IMF in the solar wind rest frame.

^b Velocity of wake protons perpendicular to IMF in the solar wind rest frame.

^c Velocity magnitude of wake protons in solar wind rest frame.

^d Solar wind velocity in aLSE co-ordinates.

bulk speed and 5 nT IMF, the value of v_{\perp} could be higher than V_{sw} for the protons to have gyro-radii larger than lunar radius. If IMF is weak, say 1 nT, then for a smaller v_{\perp} itself ($\sim 200 \text{ km s}^{-1}$), the gyro-radius of protons can be larger than lunar radius. Since these protons have larger thermal velocity, they may have significant v_{\parallel} component also. Although this mechanism have been observed during magnetic field aligned flow ($\theta_{IMF} \sim 0^\circ$), this can be active for other IMF orientations as well, although the flux may be lower. We use the term ‘Entry-3’ for this process. Since protons of Entry-3 depend solely on their gyro-radii to enter into the wake, they may access all the five locations. The populations A1, A2, B1, B2, B3, C2 in location 1; D1, D2, E1, E3, F1 in location 2; G1, G3, H1, H2, H3, I1, I2 in location 3; and J1, K1, L2 in location 4 have the characteristics of Entry-3 protons. To assess the contribution of Entry-3 in the above populations, we considered the magnitude of IMF that was prevailing during the observation. From the IMF magnitude, the minimum v_{\perp} that is required for the gyro-radius of protons to be equal to that of lunar radius, is estimated. This estimated v_{\perp} is compared against the observed v_{\perp} of different populations. This analysis showed that Entry-3 can play a role for the populations B2, B3 in location 1; D2, E1, E3, F1 in location 2; G1, G3, H1, H2, I2 in location 3; and J1, K1 in location 4. Entry-3 may contribute partially for C2, and L2 because of the low IMF condition during some of the observation of these populations.

It has been observed that 0.1–1% of the solar wind protons scatter back to space upon interaction with the lunar surface (Saito et al., 2008). Also, < 50% of solar wind protons scatter upon interaction with the lunar magnetic anomalies (Lue et al., 2011; Saito et al., 2010). The protons scattered from anomalies are found to have velocities almost similar to that of solar wind but heated up (Lue et al., 2011; Saito et al., 2010). In solar wind rest frame,

such protons will have similar velocity distribution as that of surface scattered protons. The trajectories of these protons would be controlled by IMF and the convective electric field (Holmström et al., 2010) and some of which can eventually access the near-lunar wake (Nishino et al., 2009a; Wang et al., 2010). We refer to such an entry mechanism as ‘Entry-4’. Although Entry-4 is similar to the Type-II mechanism reported by Nishino et al. (2009a) with reference to the surface scattered protons, Entry-4 includes protons scattered by magnetic anomalies as well. In the solar wind frame, the backscattered protons will have velocities in the range V_{sw} to $2 \times V_{sw}$ considering the extreme scattering angles of 90° and 180° , and assuming negligible energy loss upon scattering. In the Moon reference frame, since the backscattered protons access the wake by traveling along $+E_c$ and crossing the $+E_c$ terminator (Nishino et al., 2009a), they are not likely to be seen in location 2, whereas they can access location 3 and location 4 for oblique IMF orientations. The populations B4, and C3 in location 1 with dominant v_{\perp} and velocities comparable to that of the background solar wind are most likely due to Entry-4. The population G3, H3, I2 in location 3 also have the characteristics associated with Entry-4. The population D2 in location 2 also have the characteristics of Entry-4 protons, but the location is close to $-E_c$ pole and hence Entry-4 is not expected.

The protons which are forward scattered at the terminator would also be able to reach the lunar wake region (Wang et al., 2010), where forward scattered protons closer to the $-E_c$ pole enter the nightside. We use the term ‘Entry-5’ for such a process. Entry-5 is used here for the forward scattered protons close to the terminator in any region (not only $-E_c$ pole). In the solar wind rest frame, the forward scattered protons will have velocities in the ranging from zero to V_{sw} for the two extreme scattering angles 0° and 90° , assuming negligible energy loss upon scattering. Also, such protons are expected to have dominant v_{\perp} as seen from the solar wind frame. Since the forward scattered protons can access the wake across $-E_c$ terminator (Wang et al., 2010), they can be seen in location 2. The populations A1, A2, B1, B2, B3, C1 in location 1; D1, D2, E1, E3, F1 in location 2; G1, H1, H2, I1 in location 3; and J1, K1, L2 in location 4 have the characteristics to be associated with Entry -5.

The summary of the various entry mechanisms discussed above, the expected velocity distribution of protons in solar wind rest frame for each mechanism and the observed populations which are most likely associated with each of the entry mechanisms are provided in Table 2. It is seen that for several populations, more than one entry mechanism may play a role.

To gain more insight into the entry process, we have carried out the backtracing of the protons belonging to different populations. The trajectory of the protons are computed backwards in time from their observed position in the lunar wake (in aLSE coordinates) under the Lorentz force. The position where the protons are observed in the lunar wake, and their observed velocities (in a given energy and direction bin of SWIM) are used as the initial values. Since the magnetic field in the wake has been found to increase to $1.5 \times B_{IMF}$ (Colburn et al., 1967), for trajectory calculations, we used magnetic field value of $1.5 \times B_{IMF}$ inside the wake region and $1.0 \times B_{IMF}$ outside the wake. Regarding the electric field, outside the wake, the protons experience the convective electric field of solar wind ($E_c = -V_{sw} \times B_{IMF}$). Inside the wake, protons will experience an additional electric field - the wake boundary electric field (Halekas et al., 2005; Kallio, 2005; Nishino et al., 2009b). Similar to that discussed in Nishino et al. (2009b) which agrees with the observations (Halekas et al., 2005), we used a wake boundary electric field value of 0.7 mV m^{-1} which acts in a region of width $0.25 \times R_L$ from the terminator, where R_L refers to the lunar radius. Fig. 7 illustrates the geometry of the wake electric field used in the backtracing. As seen from Fig. 7, the electric field is directed

Table 2
Mechanisms of entry of solar wind protons in the near-lunar wake, expected velocity distribution in solar wind rest frame, and the observed populations which are most likely associated with each of the entry mechanisms.

Process	References	Expected velocity distribution	Observed population
Entry-1	Futaana et al. (2010)	Dominant $v_{ }$ ($v_{\perp} \sim 0$); $v_p < < V_{sw}$	G2, H4, I1, L1
Entry-2	Nishino et al. (2009b)	Dominant v_{\perp} ($v_{ } \sim 0$); $v_p < V_{sw}$	A1, B2, C1, D1, E1, F1, G1, H1
Entry-3	Dhanya et al. (2013)	Dominant v_{\perp} ; v_p may be greater or smaller than V_{sw}	B2, B3, D2, E1, E3, F1, G1, G3, H1, H2, I2, J1, K1, C2*, L2*
Entry-4	Nishino et al. (2009a),	Dominant v_{\perp} ; $v_p: \sim V_{sw}$ to $2 \times V_{sw}$	B4, C3, G3, H3, I2
Entry-5	Wang et al. (2010)	Dominant v_{\perp} ; $v_p < < V_{sw}$	A1, A2, B1, B2, B3, C1, D1, E1, E3, F1, G1, H1, H2, J1, K1, L2

v_p = velocity of the wake protons
 V_{sw} = solar wind bulk velocity.

* Partially due to the low IMF condition during some of the observation of these populations

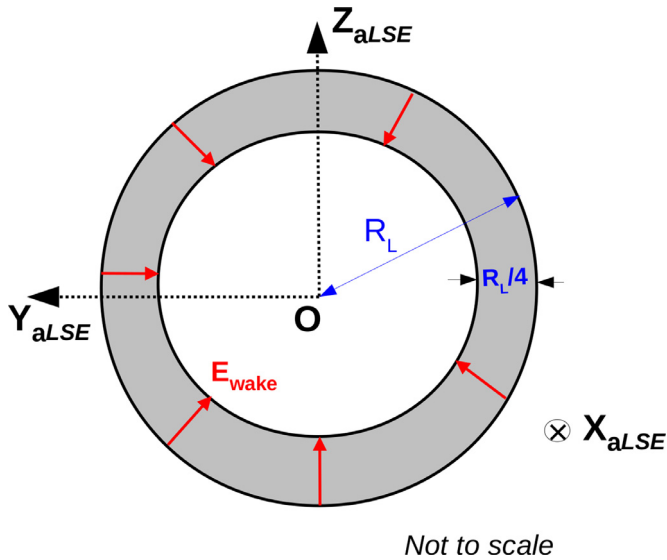


Fig. 7. Illustration of the lunar wake boundary electric field (E_{wake}) taken in the proton backtracing model. The outer circle represents the lunar terminator (wake boundary). E_{wake} is shown by red arrows from the wake boundary pointing inwards towards the Sun–Moon line. E_{wake} acts in the shaded region of width $0.25 \times R_L$ from the wake boundary, where R_L refers to the lunar radius. The inner circle has a radius of $0.75 \times R_L$. The magnitude of E_{wake} is 0.7 mV m^{-1} . This scheme is similar to that discussed in Nishino et al. (2009b) and agrees with the observations (Halekas et al., 2005). The x, y, z axes are as defined in the aLSE co-ordinate system, where x -axis points into the plane of the paper. (For interpretation of the references to color in this figure legend, the reader is referred to the web version of this article.)

inward from the terminator towards the Sun–Moon line (Nishino et al., 2009b).

To solve the Lorentz equation numerically, Euler’s method was used with a time step of 0.001 s. The model calculates the position and velocity of the protons back in time (in aLSE) until proton trajectory either intersect the lunar surface or travel a sufficiently larger distance ($>5000 \text{ km}$) upstream. In other words, calculations terminate when either the magnitude of the position vector of the protons becomes less than or equal to the radius of the Moon (1738 km) or exceeds 5000 km. For the solar wind velocity and IMF, data from ACE satellite (time shifted to the location of Moon) was used. Backtracing was not done for the populations which were considered to be associated with Entry-1 (G2, H4, I1, L1).

The results of the backtracing for the four populations A1, G3, H3, and L2 are shown in Fig. 8. The plots are generated by binning the position co-ordinates of the protons at the end of backtracing

into grids of size $100 \times 100 \text{ km}$ and are projected onto different 2-D planes (x - y , x - z , and y - z) in aLSE co-ordinates. The counts observed, in a particular energy and direction bin of SWIM, are accumulated over the spatial grids at the end of backtracing and is represented as color bar. The trajectories which terminate on the nightside surface should be ignored since they are unrealistic.

From Fig. 8a–c, it can be seen that for population A1, almost all particles goes to the solar wind (99.3%) with a minor contribution from the dayside surface (0.6%) close to the terminator. The value 99.3% represents the ratio of observed counts which terminate in solar wind to the sum of counts which terminate in the solar wind and on the dayside surface, at the end of backtracing. Similarly, 0.6% represents the ratio of observed counts which terminate on the dayside surface to the sum of counts which terminate in solar wind and on the dayside surface, at the end of backtracing. Thus, the source of A1 is most likely Entry-2 with minor contribution from Entry-5, as expected from the velocity distribution.

Fig. 8d–f shows that the population G3 has significant contribution (31%) from the surface. The protons scattered from surface (or magnetic anomalies) may contribute significantly to G3. The mechanisms could be Entry-4 (from surface) and Entry-3 (from solar wind) as expected from the velocity distribution. Similarly, for the population H3 also (Fig. 8g–i), backtracing shows significant contribution from the dayside surface (17%). The mechanism could be Entry-4 which agrees with the inference drawn from the velocity distribution. Whereas both the velocity distribution and backtracing suggested the contribution from Entry-4, backtracing has shown that the dominant source is solar wind. The velocity distribution for H3 do not support Entry-2 as the source and Entry-3 is also not expected to contribute based on the prevailing IMF. Thus, the process by which solar wind contribute to H3 is left open. Population L2 (Fig. 8j–l), have dominant contribution from solar wind with minor contribution (0.2%) from surface. As discussed before, L2 was considered to be associated with Entry-5 and Entry-3 (partially) based on the velocity distribution. Backtracing shows that Entry-3 may still contribute whereas Entry-5 may make only minor contribution to L2.

Similar backtracing carried out for other populations (results not shown), indicated that the population A2 has roughly equal contributions from the solar wind (43.4%) and the dayside surface (56.5%). As discussed before, neither Entry-2 nor Entry-3 plays a role for A2. Thus the mechanism for the contribution from solar wind is not clear. The surface contribution is more likely associated with Entry-5. For other populations in location 1, backtracing showed that the source for B1, B2, B3, B4, C1, C2 and C3 is mainly solar wind with almost no contribution from surface. For B1, the velocity distribution indicate Entry-5 as possible mechanism whereas backtracing suggest no contribution from the

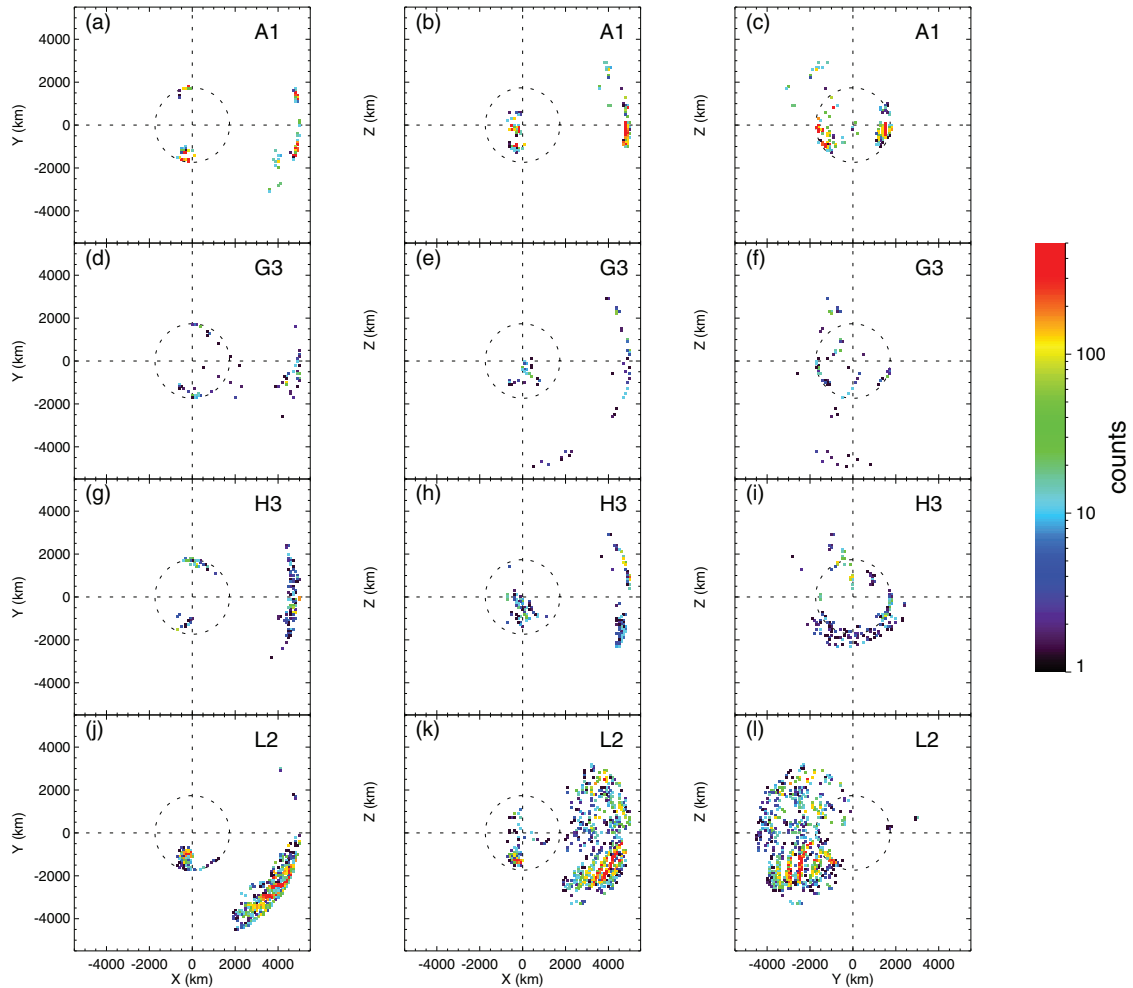


Fig. 8. Backtracing results in aLSE co-ordinates. (a)–(c): for population A1 in location 1, (d)–(f): population G3 in location 3, (g)–(i): population H3 in location 3, (j)–(l): population L2 in location 4. The left most panels (a), (d), (g), (j) show projection in the $x-y$ plane; middle panels (b), (e), (h), (k) show projection in the $x-z$ plane; and right most panels (c), (f), (i), (l) represent projection in $y-z$ plane. The protons are traced back based on their observed location, energy and direction. The color bar represents the counts of the protons (observed in the specific energy and direction bins of SWIM) accumulated over the spatial grids of size $100 \text{ km} \times 100 \text{ km}$, at the end of backtracing. The protons which hit the nightside surface are unrealistic. The value of magnetic field in the wake is assumed to be $1.5 \times B_{IMF}$ (Colburn et al., 1967). In addition to the convective electric field of solar wind, a wake boundary electric field of 0.7 mV m^{-1} has been considered (see Fig. 7 for details). (For interpretation of the references to color in this figure legend, the reader is referred to the web version of this article.)

surface. The population B2 is more likely associated with Entry-2 and Entry-3, B3 with Entry-3, and C1 with Entry-2. As discussed before, Entry-3 may partially account for population C2, and hence there may be some other unknown entry mechanism that also contribute to C2.

Regarding B4 and C3 in location 1, they have significant v_{\parallel} and v_{\perp} , and the velocities are comparable to that of solar wind. Also, the $(v_{\parallel}, v_{\perp})$ components are similar to that of solar wind. They were suspected to be associated with Entry-4 as inferred from the velocity distribution. However, backtracing suggested that they are purely of solar wind origin without any surface contribution (i.e., Entry-4 not supported). Thus their source remains unknown. However, since their velocity components are similar to that of solar wind, they could be lunar exospheric H^+ that are picked up by the solar wind (closer to the terminator) above the lunar surface. However, a detailed analysis is required to confirm these and is the scope for future work.

In location 2, backtracing showed that populations D1 has minor contribution from surface ($<3\%$), and are dominantly of solar wind origin. They could be due to Entry-2 with minor contributions from Entry-5. Backtracing for D2 suggests that the major source is solar wind with significant contribution from sur-

face (21.5%). The entry mechanism from solar wind could be Entry-3, whereas the mechanism for the source from the surface cannot be explained. Similar to D1, E1 also have dominant contribution from solar wind (99.5%) with minor contribution from surface. The source of E1 could be Entry-2, Entry-3 and minor contribution from Entry-5 as expected. For E3, significant contribution is seen from surface ($\sim 7\%$) and could be associated with Entry-3 as major process with significant role by Entry-5. F1 have solar wind as dominant source (98%) and also contribution from surface. F1 could be due Entry-2, Entry-3 and with significant contribution from Entry-5.

The population E2 in location 2, which appears as a strip in the velocity distribution map, has comparable v_{\parallel} and v_{\perp} , and the velocity magnitude is comparable to that of solar wind. The backtracing for E2 showed minor ($<2\%$) contribution from surface and dominant contribution from solar wind. For the surface contribution, Entry-4 across $-E_c$ pole is unlikely (even if the protons are from magnetic anomaly). Thus, the source process for E2 is not clear.

In location 3, backtracing suggests that populations G1 and H1 have minor contribution from surface ($<1\%$), and is dominantly of solar wind origin. Entry-2, Entry-3, and Entry-5 can be associated

Table 3

Entry mechanisms expected from velocity distribution, the source identified from backtracing, and inferences on the entry mechanisms of the different populations at locations 1–4 compared with that of backtracing.

Location	Population	Entry mechanism from velocity distribution	Result from backtracing*	Inference
1	A1	Entry-2, Entry-5	Solar wind (99.3%)	Entry-2, Entry-5
1	A2	Entry-5	Solar wind (43.4%)	Entry-5 and unknown mechanism for the direct solar wind entry
1	B1	Entry-5	Solar wind (100%)	Mechanism unknown
1	B2	Entry-2, Entry-3, Entry-5	Solar wind (100%)	Entry-2, Entry-3
1	B3	Entry-3, Entry-5	Solar wind (100%)	Entry-3
1	B4	Entry-4	Solar wind (100%)	Unknown
1	C1	Entry-2, Entry-5	Solar wind (100%)	Entry-2
1	C2	Entry-3**	Solar wind (100%)	Entry-3 and unknown mechanism
1	C3	Entry-4	Solar wind (100%)	Unknown
2	D1	Entry-2, Entry-5	Solar wind (96.7%)	Entry-2, Entry-5
2	D2	Entry-3	Solar wind (78.5%)	Entry-3, and source from the dayside surface is unknown
2	E1	Entry-2, Entry-3, Entry-5	Solar wind (99.5%)	Entry-2, Entry-3, Entry-5
2	E2	unknown	Solar wind (98.3%)	Process unknown
2	E3	Entry-3, Entry-5	Solar wind (93%)	Entry-3, Entry-5
2	F1	Entry-2, Entry-3, Entry-5	Solar wind (98%)	Entry-2, Entry-3, Entry-5
3	G1	Entry-2, Entry-3, Entry-5	Solar wind (99.6%)	Entry-2, Entry-3, Entry-5
3	G2	Entry-1	–	Entry-1
3	G3	Entry-3, Entry-4	Solar wind (69%)	Entry-3, Entry-4
3	H1	Entry-2, Entry-3, Entry-5	Solar wind (98.6%)	Entry-2, Entry-3, Entry-5
3	H2	Entry-3, Entry-5	Solar wind (89%)	Entry-3, Entry-5
3	H3	Entry-4	Solar wind (83%)	Entry-4 and unknown mechanism for the direct solar wind entry
3	H4	Entry-1	–	Entry-1
3	I1	Entry-1	–	Entry-1
3	I2	Entry-3, Entry-4	Solar wind (97.5%)	Entry-3, Entry-4
4	J1	Entry-3, Entry-5	Solar wind (100%)	Entry-3
4	K1	Entry-3, Entry-5	Solar wind (99%)	Entry-3, Entry-5
4	L1	Entry-1	Solar wind (99.9%)	Entry-1
4	L2	Entry-3**, Entry-5	Solar wind (99.8%)	Entry-3 and unknown mechanism, Entry-5

* The contribution from solar wind is given. The value in brackets represents the ratio (in percentage) of the observed proton counts which terminate in solar wind to the sum of the counts which terminate in the solar wind and the dayside surface, at the end of backtracing. The difference of this value from 100% represents the contribution from the dayside surface.

** Partially due to the low IMF condition during some of the observation of these populations.

with these populations. For H2, backtracing showed major contribution from solar wind, likely to be due to Entry-3, and significant contribution from surface (11%) which may be due to Entry-5. Backtracing for I2 suggests major contribution from solar wind which may be due to Entry-3 with significant contribution from surface (~2.5%), which could be due to Entry-4, as expected from the velocity distribution.

In location 4, for J1 backtracing shows solar wind as the source with no contribution from the surface. The entry mechanism for solar wind protons could be associated with Entry-3. For the population K1, the dominant source appears to be solar wind (likely to be associated with Entry-3) and the contribution from surface is negligible (<1%) which can be associated with Entry-5.

In summary, of the 28 populations of protons in the near-lunar wake observed by SWIM, several populations are associated with known processes, such as Entry-1, Entry-2, Entry-3, Entry-4 and Entry-5. There are a few populations whose entry process could not be explained by the known mechanisms. These include direct solar wind contribution for A2, B1, B4, C3, E2, H3, and dayside surface contribution for E2, D2. Since Entry-3 may partially account for populations C2 and L2, there may be some other unknown entry mechanism that also contribute to these populations. Table 3 provides a summary of the results on the entry mechanisms associated with the different populations that are arrived at based on the velocity distribution and backtracing.

It is to be noted that except parallel entry, all other known entry mechanism involve the gyration of the solar wind protons around IMF, either by virtue of large thermal velocity or by experiencing additional electric field (convective or at wake bound-

ary) and their trajectories enable the protons to enter the near-lunar wake.

6. Conclusion

Using the observations by SWIM sensor of the SARA experiment on Chandrayaan-1, the velocity distributions of the protons in the near-lunar wake (100 to 200 km from the lunar surface) are computed in the solar wind rest frame. The velocity distributions were further sorted according to the angle between the upstream solar wind velocity and IMF. The distributions are not identical for different IMF orientation, which suggests the control of IMF in the proton entry process. The protons were found to enter the lunar wake parallel as well as perpendicular to the direction of IMF. Most of the observed protons have velocities lower than that of the solar wind, and a few populations have velocity comparable to that of solar wind. From the velocity distribution, several population of protons were identified based on the selection criterion. The possible mechanism for the proton entry to the near wake associated with these populations were inferred from the characteristics of velocity distribution. The mechanisms include diffusion of solar wind protons into the wake along IMF, by virtue of gyro-radii of solar wind protons and scattering of solar wind protons from the dayside lunar surface or from magnetic anomalies. To gain more insight into the source of these populations, the trajectory of the protons are computed back in time (backtracing) under the influence of IMF, convective and wake boundary electric field. For most of the populations, the source of the protons obtained from backtracing agree with the inferences

drawn from the velocity distribution. There are few populations whose entry mechanism could not be explained by the known processes.

Acknowledgments

We thank the ACE SWEPAM instrument team, ACE MAG instrument team and the ACE Science Center for providing the ACE data. This work has been supported by the Indo-Swedish International Collaborative Research Grant by the Swedish International Development Corporation Agency (SIDA). The efforts at Space Physics Laboratory of Vikram Sarabhai Space Centre are supported by Indian Space Research Organisation (ISRO). The effort at the University of Bern was supported in part by ESA and by the Swiss National Science Foundation.

References

- Barabash, S., Bhardwaj, A., Wieser, M., et al., 2009. Investigation of the solar wind-moon interaction onboard Chandrayaan-1 mission with the SARA experiment. *Curr. Sci.* 96 (4), 526–532.
- Bhardwaj, A., Barabash, S., Futaana, Y., et al., 2005. Low energy neutral atom imaging on the moon with the SARA instrument aboard Chandrayaan-1 mission. *J. Earth Syst. Sci.* 114 (6), 749–760.
- Bhardwaj, A., Dhanya, M.B., Alok, A., et al., 2015. A new view on solar wind interaction with moon. *Geosci. Lett.* 2, 1–15.
- Colburn, D.S., Currie, R.G., Mihalov, J.D., 1967. Diamagnetic solar wind cavity discovered behind the moon. *Science* 158, 1040–1042.
- Dhanya, M.B., Bhardwaj, A., Futaana, Y., et al., 2013. Proton entry into the near-lunar plasma wake for magnetic field aligned flow. *Geophys. Res. Lett.* 40, 2913–2917.
- Futaana, Y., Barabash, S., Wieser, M., et al., 2010. Protons in the near-lunar wake observed by the sub-keV atom reflection analyzer on board Chandrayaan-1. *J. Geophys. Res.* 115, A10248.
- Gurevich, A.V., Paryiskaya, L.V., Pitaevsky, L.P., 1973. Ion acceleration upon expansion of a rarefield plasma. *Sov. J. Exp. Theor. Phys.* 36, 274–281.
- Halekas, J.S., Angelopoulos, V., Sibeck, D.G., 2011. First results from ARTEMIS, a new two-spacecraft lunar mission: Counter-streaming plasma populations in the lunar wake. *Space Sci. Rev.* 165, 93–107.
- Halekas, J.S., Bale, S.D., Mitchell, D.L., 2005. Electrons and magnetic fields in the lunar plasma wake. *J. Geophys. Res.* 110, A07222.
- Halekas, J.S., Brain, D.A., Holmström, M., 2015. The moon's plasma wake. In: Keil-ling, A., Jackman, C.M., Delamere, P.A. (Eds.), *In: Magnetotails in the Solar System*. Geophysical Monograph 207. American Geophysical Union, John Wiley & Sons, United States.
- Halekas, J.S., Poppe, A.R., McFadden, J.P., 2014. The effects of solar wind velocity distributions on the refilling of the lunar wake: ARTEMIS observations and comparisons to one-dimensional theory. *J. Geophys. Res. Space Physics* 119, 5133–5149.
- Holmström, M., Wieser, M., Barabash, S., et al., 2010. Dynamics of solar wind protons reflected by the moon. *J. Geophys. Res.* 115, A06206.
- Kallio, E., 2005. Formation of the lunar wake in quasi-neutral hybrid model. *Geophys. Res. Lett.* 32, L06107.
- Lue, C., Futaana, Y., Barabash, S., et al., 2011. Strong influence of lunar crustal fields on the solar wind flow. *Geophys. Res. Lett.* 38, L03202.
- Nishino, M.N., Fujimoto, M., Maezawa, K., et al., 2009a. Solar-wind proton access deep into the near-moon wake. *Geophys. Res. Lett.* 36, L16103.
- Nishino, M.N., Fujimoto, M., Saito, Y., et al., 2013. Type-II entry of solar wind protons into the lunar wake: Effects of magnetic connection to the night-side surface. *Planet. Space Sci.* 87, 106–114.
- Nishino, M.N., Maezawa, K., Fujimoto, M., et al., 2009b. Pairwise energy gain-loss feature of solar wind protons in the near-moon wake. *Geophys. Res. Lett.* 36, L12108.
- Saito, Y., Yokota, S., Asamura, K., et al., 2010. In-flight performance and initial results of plasma energy angle and composition experiment (PACE) on SELENE (KAGUYA). *Space Sci. Rev.* 154, 265–303.
- Saito, Y., Yokota, S., Tanaka, T., et al., 2008. Solar wind proton reflection at the lunar surface: Low energy ion measurements by MAP-PACE onboard SELENE (KAGUYA). *Geophys. Res. Lett.* 35, L24205.
- Samir, U., Wright Jr, K.H., Stone, N.H., 1983. The expansion of a plasma into a vacuum: Basic phenomena and processes and applications to space plasma physics. *Rev. Geophys.* 21 (7), 1631–1646.
- Wang, X.-D., Bian, W., Wang, J.-S., et al., 2010. Acceleration of scattered solar wind protons at the polar terminator of the moon: Results from Chang'e-1/SWIDs. *Geophys. Res. Lett.* 37, L07203.
- Wiehle, S., Plaschke, F., Motschmann, U., et al., 2011. First lunar wake passage of ARTEMIS: Discrimination of wake effects and solar wind fluctuations by 3d hybrid simulations. *Planet. Space Sci.* 59 (8), 661–671.